

**PWXL 25W TUNABLE****Caratteristiche - Specifications**

Materiale - Material	<b>Alluminio - Aluminum</b>
Peso al metro - Weight per meter	<b>1880 g</b>
Lunghezza - Length	<b>Su misura - Custom made</b>
Grado protezione - IP rating	<b>IP20</b>
Finitura standard verniciata - Standard painted finish	<input type="checkbox"/>
Verniciatura optional - Optional painting	<input type="checkbox"/> <input type="checkbox"/> <input type="checkbox"/> <input type="checkbox"/> <input type="checkbox"/>
Marcature - Marking	<b>EAC CE</b>

**Caratteristiche Elettriche - Electrical specifications**

Gruppo di alimentazione - Power supply unit	<b>Remoto/ Remote</b>
Tensione di alimentazione - Supply voltage	<b>24 Vdc</b>
Potenza totale - Total power	<b>25 W/m</b>
Classe di isolamento - Insulation class	<input type="checkbox"/>
Dimmerazioni disponibili - Dimming available	<b>Casambi</b>

**Sorgente luminosa - Light source**

Tipo di sorgente - Type of source	<b>LED</b>
Temperatura colore - Color temperature	<b>2700 K - 5700K</b>
Flusso nominale LED - Nominal LED flux	3692 lm/m
Efficienza modulo LED - LED module efficiency	147 lm/W
Classe efficienza energetica LED - Efficiency class LED	<b>E</b>
Durata - Duration life	<b>L80/ B10 (25 °C) &gt; 50.000 h</b>

**Apparecchio - Device**

Flusso lampada - Light flux	2584 lm/m
Efficienza lampada LED - LED lamp efficiency	103 lm/W
Indice rosso saturo - Saturated red colour index (R9)	<b>&gt;90</b>
Indice di resa cromatica - Colour rendering index (Ra)	<b>95</b>
SDCM	<b>3</b>
Rischio fotobiologico - Photobiological risk	<b>RG 0</b>

**Caratteristiche sistema ottico - Optical system characteristics**

Materiale dell'ottica - Material lens	<b>Policarbonato - Polycarbonate</b>
---------------------------------------	--------------------------------------

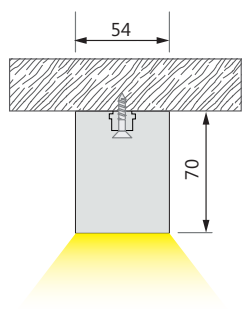
**\* Schermo disponibile in lunghezze fino a 6m. Screen available in lengths up to 6m.**

**Codice prodotto - Product Code**

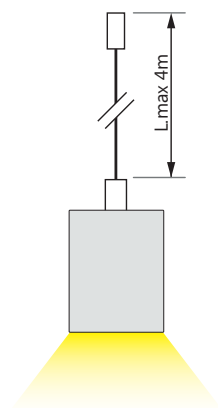
PWXL\_DYNAMIC

# PWXL 25W TUNABLE

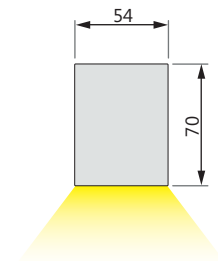
SISTEMA DI FISSAGGIO - FASTENING SYSTEM



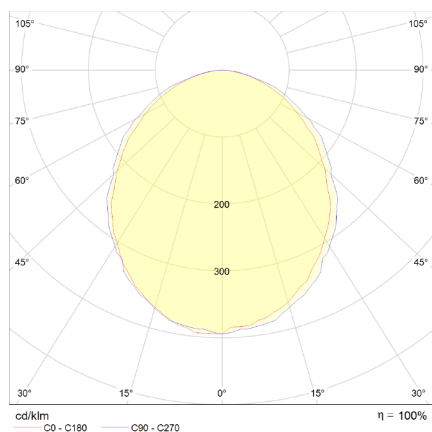
**Plafone - Ceiling**



**Sospensione - Suspension**



## DATI FOTOMETRICI - PHOTOMETRIC DATA



**Ottica 107°**

## ACCESSORI - ACCESSORIES

### CAVI PER SOSPENSIONI - SUSPENSION CABLES



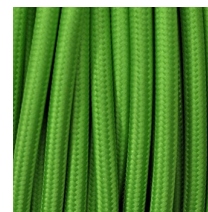
SEMITRASPARENTE  
SEMITRASPARENTE



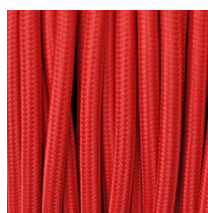
TINTA UNITA NERO  
EFFETTO SETA  
BLACK PLAIN COLOUR  
SILK EFFECT



TINTA UNITA BIANCO  
EFFETTO SETA  
WHITE PLAIN COLOUR  
SILK EFFECT



TINTA UNITA VERDE  
EFFETTO SETA  
GREEN PLAIN COLOUR SILK  
EFFECT



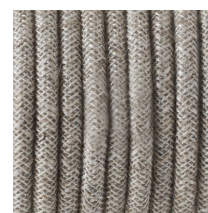
TINTA UNITA ROSSO  
EFFETTO SETA  
RED PLAIN COLOUR SILK  
EFFECT



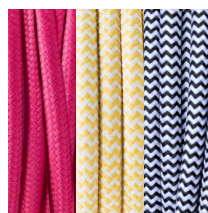
TINTA UNITA  
NERO TRECCIATO  
BLACK PLAIN  
BRAIDED COLOUR



LINO NATURALE GRIGIO  
NATURAL LINEN GRAY

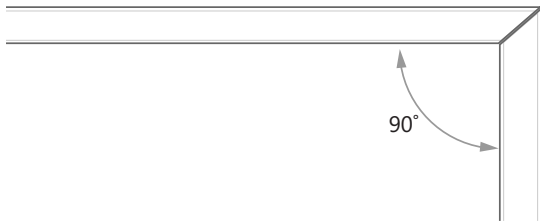


LINO NATURALE  
MARRONE NATURAL  
LINEN BROWN

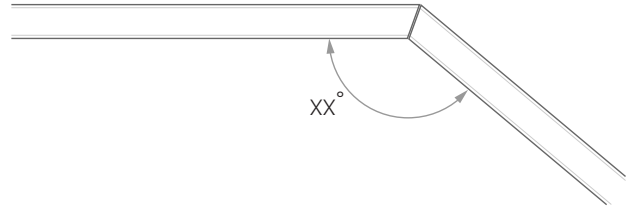


\*SU RICHIESTA  
\*ON REQUEST

Per le lampade a sospensione è possibile scegliere tra una vasta gamma di modelli di cavi. Il kit a sospensione è dotato di tiranti in acciaio della lunghezza di max 4 metri.  
For suspensions lamps it's possible to choose through different types of cables. The suspensions kit has steel tie rods with max 4 meters length.



CUT ANGLE 45° + 45°

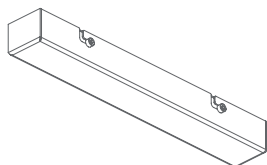


CUSTOM CUT ANGLE

## ACCESSORI - ACCESSORIES

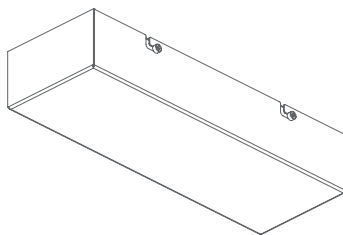
### ROSONI PORTA ALIMENTATORE - POWER SUPPLY BOXES

#### VERSIONE CLASSICA - CLASSIC VERSION



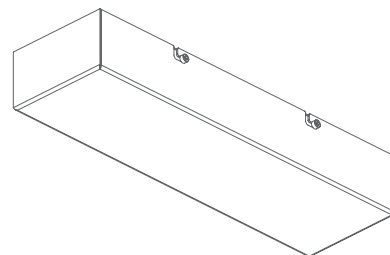
PORTA ALIMENTATORE S  
POWER SUPPLY BOX S

Exterior dimensions: 280 x 45 x h 34 mm



PORTA ALIMENTATORE M  
POWER SUPPLY BOX M

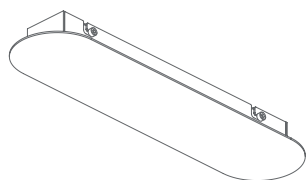
Exterior dimensions: 292 x 103 x h 58 mm



PORTA ALIMENTATORE L  
POWER SUPPLY BOX L

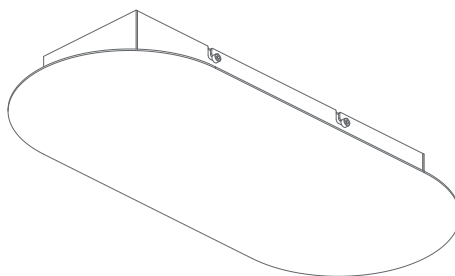
Exterior dimensions: 352 x 113 x h 58 mm

#### VERSIONE TONDA - ROUND VERSION



PORTA ALIMENTATORE TONDO S  
POWER SUPPLY BOX ROUND S

Exterior dimensions: 345 x 85 x h 36 mm



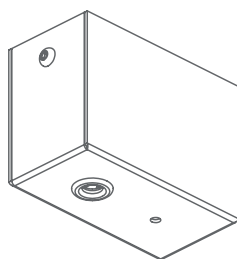
PORTA ALIMENTATORE TONDO S  
POWER SUPPLY BOX ROUND S

Exterior dimensions: 465 x 210 x h 60 mm

#### FINITURE - FINISHES



#### VERSIONE AAG - AAG VERSION



ROSONE METALLICO CON MORSETTIERA  
CUP WITH TERMINAL BLOCK

Exterior dimensions: 62 x 32 x 45 mm  
2 X 3P: 450V-30A  
T: 115°C  
sez. 2,5mmq

#### FINITURE - FINISHES



La serie di porta alimentatori ROUND è particolarmente indicata per tutte le lampade dalle forme sinuose e morbide. I rosoni porta alimentatore sono realizzati in alluminio verniciato bianco o nero (altre finiture su richiesta).  
The ROUND series of power supply boxes is particularly suitable for all lamps with sinuous and soft shapes. The power supply boxes are made in aluminum painted white or black (other finishings on request).