

PWXL 15W PRISM**Caratteristiche - Specifications**

| | |
|--|---|
| Materiale - Material | Alluminio - Aluminum |
| Peso al metro - Weight per meter | 1880 g |
| Lunghezza - Length | Su misura - Custom made |
| Grado protezione - IP rating | IP20 |
| Finitura standard verniciata - Standard painted finish | <input type="checkbox"/> |
| Verniciatura optional - Optional painting | <input type="checkbox"/> <input type="checkbox"/> <input type="checkbox"/> <input type="checkbox"/> |
| Marcature - Marking | EAC CE |

Caratteristiche Elettriche - Electrical specifications

| | |
|--|---------------------------------------|
| Gruppo di alimentazione - Power supply unit | Remoto/ Remote |
| Tensione di alimentazione - Supply voltage | 24 Vdc |
| Potenza totale - Total power | 15 W/m |
| Classe di isolamento - Insulation class | <input type="checkbox"/> |
| Dimmerazioni disponibili - Dimming available | Casambi - Dali - Push - 1-10 V |

Sorgente luminosa - Light source

| | | | |
|---|---------------------------------------|---------------|---------------|
| Tipo di sorgente - Type of source | LED | | |
| Temperatura colore - Color temperature | 2700 K | 3000 K | 4000 K |
| Flusso nominale LED - Nominal LED flux | 2188 lm/m | 2255 lm/m | 2334 lm/m |
| Efficienza modulo LED - LED module efficiency | 145 lm/W | 150 lm/W | 155 lm/W |
| Classe efficienza energetica LED - Efficiency class LED | D | | |
| Durata - Duration life | L80/ B10 (25 °C) > 50.000 h | | |

Apparecchio - Device

| | | | |
|--|---------------------------|---------------------------|---------------------------|
| Temperatura colore - Color temperature | 2700 K¹ | 3000 K² | 4000 K³ |
| Flusso lampada - Light flux | 1510 lm/m | 1556 lm/m | 1610 lm/m |
| Efficienza lampada LED - LED lamp efficiency | 101 lm/W | 104 lm/W | 107 lm/W |
| Indice rosso saturo - Saturated red colour index (R9) | >60 | >70 | >80 |
| Indice di resa cromatica - Colour rendering index (Ra) | 95 | | |
| SDCM | 3 | | |
| Rischio fotobiologico - Photobiological risk | RG 0 | | |
| Coefficiente di abbagliamento - UGR | UGR 19 | | |

Caratteristiche sistema ottico - Optical system characteristics

| | |
|---------------------------------------|--|
| Materiale dell'ottica - Material lens | Policarbonato - Polycarbonate |
| Schermo - Screen | Microprismatic - Microprismatic |

* Schermo disponibile in lunghezze fino a 6m. Screen available in lengths up to 6m.

Codice prodotto - Product Code

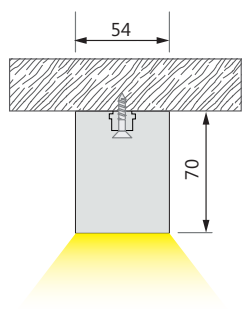
¹ PWXL_56L_MED_PRISM_WW2_9

² PWXL_56L_MED_PRISM_WW9

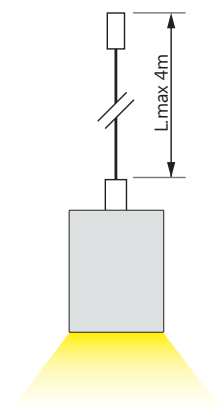
³ PWXL_56L_MED_PRISM_NW9

PWXL 15W PRISM

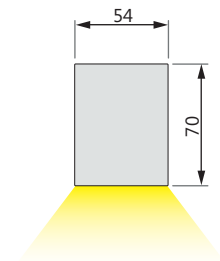
SISTEMA DI FISSAGGIO - FASTENING SYSTEM



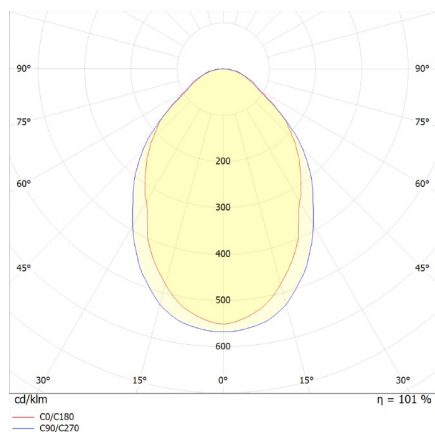
Plafone - Ceiling



Sospensione - Suspension



DATI FOTOMETRICI - PHOTOMETRIC DATA



Ottica 82°

ACCESSORI - ACCESSORIES

CAVI PER SOSPENSIONI - SUSPENSION CABLES



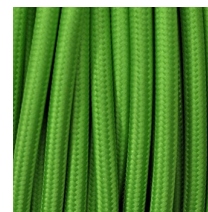
SEMITRASPARENTE
SEMITRASPARENTE



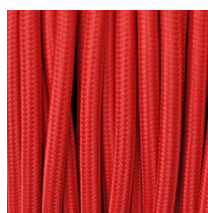
TINTA UNITA NERO
EFFETTO SETA
BLACK PLAIN COLOUR
SILK EFFECT



TINTA UNITA BIANCO
EFFETTO SETA
WHITE PLAIN COLOUR
SILK EFFECT



TINTA UNITA VERDE
EFFETTO SETA
GREEN PLAIN COLOUR SILK
EFFECT



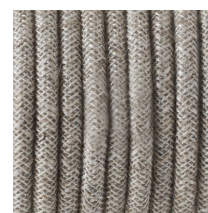
TINTA UNITA ROSSO
EFFETTO SETA
RED PLAIN COLOUR SILK
EFFECT



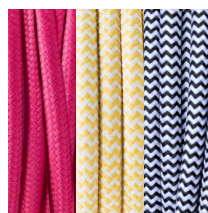
TINTA UNITA
NERO TRECCIATO
BLACK PLAIN
BRAIDED COLOUR



LINO NATURALE GRIGIO
NATURAL LINEN GRAY

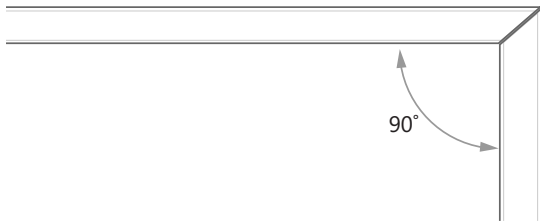


LINO NATURALE
MARRONE NATURAL
LINEN BROWN

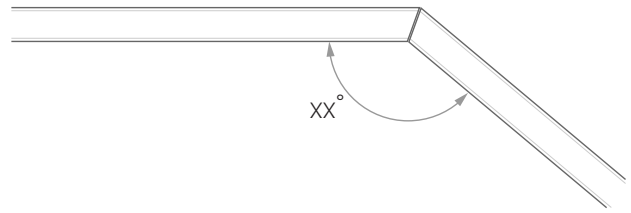


*SU RICHIESTA
*ON REQUEST

Per le lampade a sospensione è possibile scegliere tra una vasta gamma di modelli di cavi. Il kit a sospensione è dotato di tiranti in acciaio della lunghezza di max 4 metri.
For suspensions lamps it's possible to choose through different types of cables. The suspensions kit has steel tie rods with max 4 meters length.



CUT ANGLE 45° + 45°

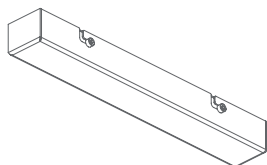


CUSTOM CUT ANGLE

ACCESSORI - ACCESSORIES

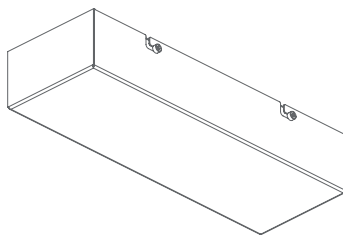
ROSONI PORTA ALIMENTATORE - POWER SUPPLY BOXES

VERSIONE CLASSICA - CLASSIC VERSION



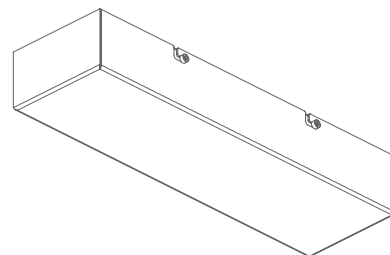
PORTA ALIMENTATORE S
POWER SUPPLY BOX S

Exterior dimensions: 280 x 45 x h 34 mm



PORTA ALIMENTATORE M
POWER SUPPLY BOX M

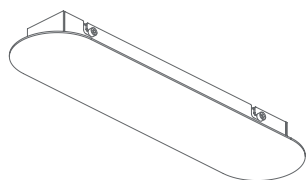
Exterior dimensions: 292 x 103 x h 58 mm



PORTA ALIMENTATORE L
POWER SUPPLY BOX L

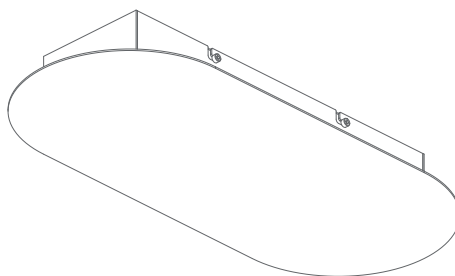
Exterior dimensions: 352 x 113 x h 58 mm

VERSIONE TONDA - ROUND VERSION



PORTA ALIMENTATORE TONDO S
POWER SUPPLY BOX ROUND S

Exterior dimensions: 345 x 85 x h 36 mm



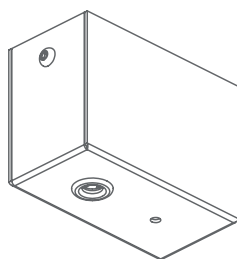
PORTA ALIMENTATORE TONDO S
POWER SUPPLY BOX ROUND S

Exterior dimensions: 465 x 210 x h 60 mm

FINITURE - FINISHES



VERSIONE AAG - AAG VERSION



ROSONE METALLICO CON MORSETTIERA
CUP WITH TERMINAL BLOCK

Exterior dimensions: 62 x 32 x 45 mm
2 X 3P: 450V-30A
T: 115°C
sez. 2,5mmq

FINITURE - FINISHES



La serie di porta alimentatori ROUND è particolarmente indicata per tutte le lampade dalle forme sinuose e morbide. I rosoni porta alimentatore sono realizzati in alluminio verniciato bianco o nero (altre finiture su richiesta).
The ROUND series of power supply boxes is particularly suitable for all lamps with sinuous and soft shapes. The power supply boxes are made in aluminum painted white or black (other finishings on request).