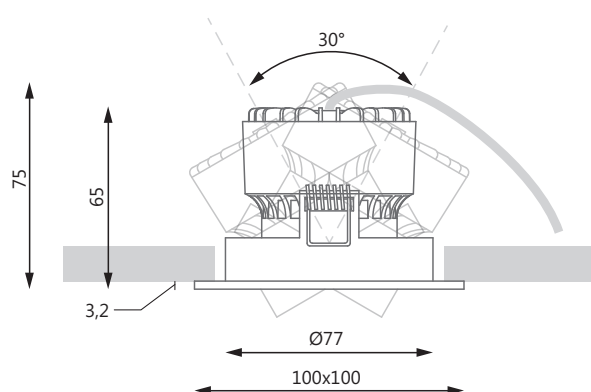
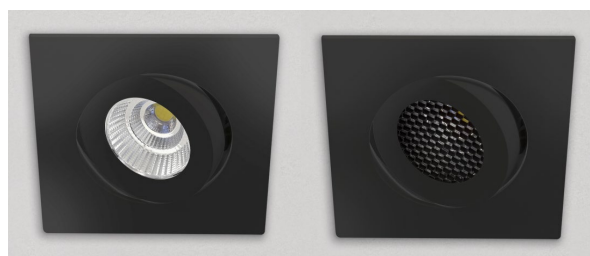


MOOD SQUARE SUNLIKE



Codice prodotto - Product Code

MOOD_SQ_XXX_yy_z_SUN_kkk

. xxx= WW2_9 (2700°K), WW9 (3000°K), NW9 (4000°K)

. yy= 13 (13°), 25 (25°), 38 (38°), 110 (110°)

. z= B (black), W (white)

. kkk (solo se dimmerabile/only for dimming)= CAS (Casambi), DALI (DALI), PUSH (PUSH, 1-10V)

Caratteristiche - Specifications

Materiale - Material	Alluminio - Aluminum
Verniciatura - Varnishing	<input type="checkbox"/> <input checked="" type="checkbox"/>
Peso - Weight	357 g
Foro per incasso - Hole for built-in	Ø85 mm
Grado protezione - IP rating	IP20
Marche - Marking	EAC CE

Caratteristiche Elettriche - Electrical specifications

Gruppo di alimentazione - Power supply unit	Incluso - Included - ON/OFF
Tensione di alimentazione - Supply voltage	100 V - 240 V
Frequenza di alimentazione - Power frequency	50 - 60 Hz
Potenza totale - Total power	12 W
Classe di isolamento - Insulation class	<input checked="" type="checkbox"/>
Dimmerazioni disponibili - Dimming available	Casambi - Dali - Push - 1-10 V

Sorgente luminosa - Light source

Tipo di sorgente - Type of source	LED
Tensione minima sul secondario - Minimum voltage on secondary circuit	31 V
Corrente di pilotaggio LED - LED driving current	300 mA
Assorbimento modulo LED - Absorption module LED	10.5 W
Temperatura colore - Color temperature	2700 K 3000 K 4000 K
Flusso nominale LED - Nominal LED flux	1059 lm 1104 lm 1131 lm
Efficienza modulo LED - LED module efficiency	100 lm/W 105 lm/W 107 lm/W
Classe efficienza energetica LED - Efficiency class LED	F
Durata - Duration life	L80/ B10 (25 °C) > 50.000 h

Apparecchio - Device

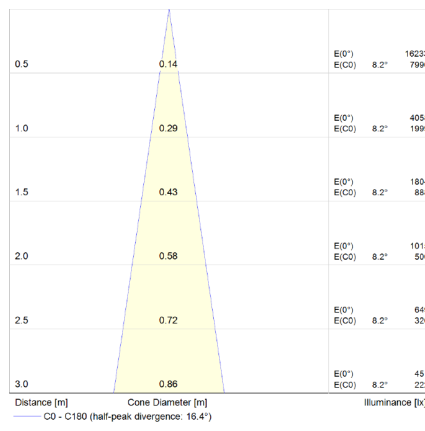
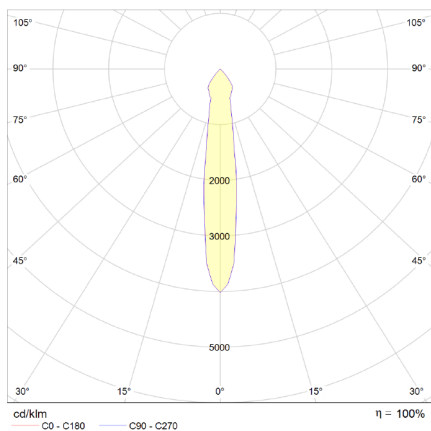
Temperatura colore - Color temperature	2700 K 3000 K 4000 K
Flusso lampada - Light flux	889 lm 927 lm 950 lm
Efficienza lampada LED - LED lamp efficiency	74 lm/W 77 lm/W 79 lm/W
Indice rosso saturo - Saturated red colour index (R9)	>90 >90 >90
Indice di resa cromatica - Colour rendering index (Ra)	97
SDCM	2
Rischio fotobiologico - Photobiological risk	RG 1

Caratteristiche sistema ottico - Optical system characteristics

Materiale dell'ottica - Material lens	Policarbonato - Polycarbonate
---------------------------------------	--------------------------------------

MOOD SQUARE SUNLIKE

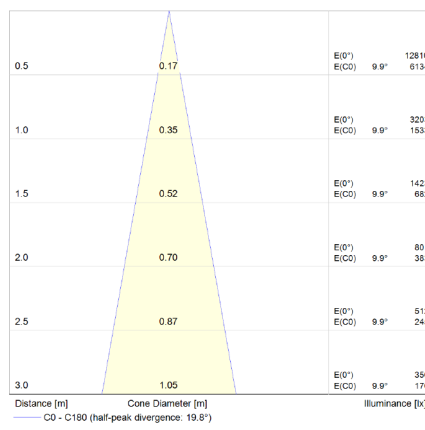
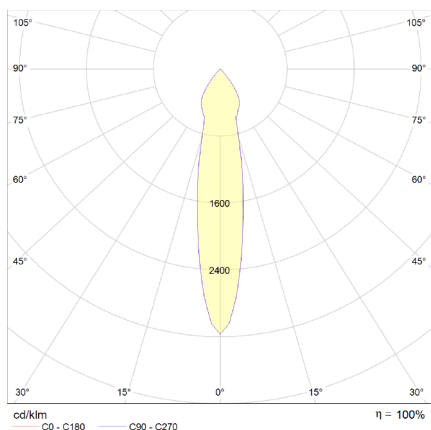
DATI FOTOMETRICI - PHOTOMETRIC DATA



Ottica 13°

Mood square Sunlike con ottica 13°

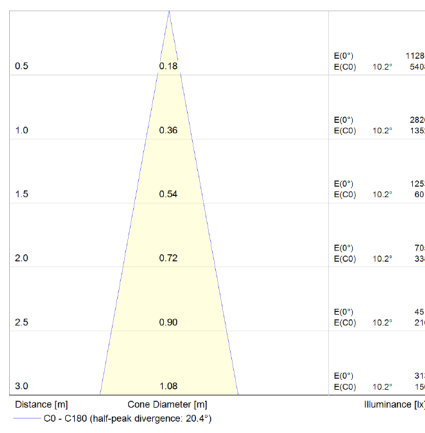
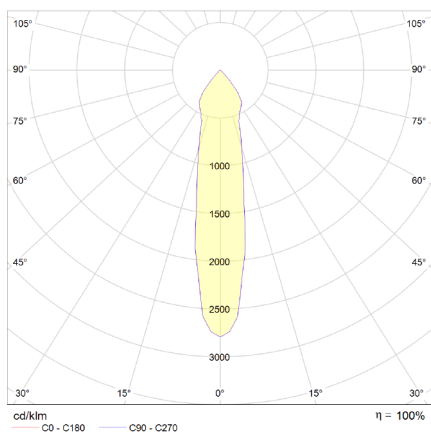
Mood square Sunlike with 13° optics



Ottica 25°

Mood square Sunlike con ottica 25°

Mood square Sunlike with 25° optics



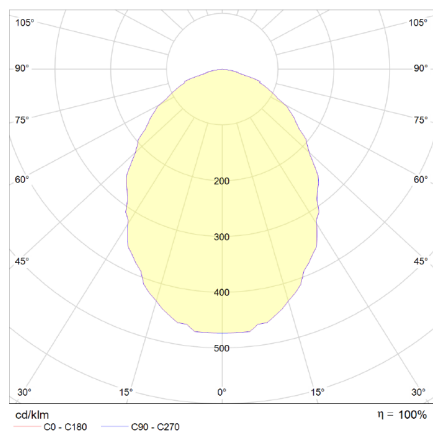
Ottica 38°

Mood square Sunlike con ottica 38°

Mood square Sunlike with 38° optics

MOOD SQUARE SUNLIKE

DATI FOTOMETRICI - PHOTOMETRIC DATA



Distance [m]	Cone Diameter [m]	E _(0°) E _(C0)	illuminance [lx]
0.5	0.96	43.8°	1530 289
1.0	1.92	43.8°	382 72
1.5	2.88	43.8°	170 32
2.0	3.84	43.8°	96 18
2.5	4.79	43.8°	61 12
3.0	5.75	43.8°	42 8

Distance [m] Cone Diameter [m] Illuminance [lx]
C0 - C180 (half-peak divergence: 67.6°)

Ottica 110°

Mood square Sunlike con ottica 110°

Mood square Sunlike with 110° optics

ACCESSORI - ACCESSORIES



Honeycomb

Filtro alveolare compatibile con Mood Square Sunlike.

Honeycomb filter compatible with Mood Square Sunlike.